

Goldeneye Plus

Automated hardwood lumber grading based on internationally recognized hardwood grading standards in transverse or lineal feed



Automated hardwood lumber grading

Microtec's Goldeneye Plus is the worldwide first solution for automated machine grading of hardwood lumber. The software reliably grades hardwood lumber based on internationally recognized NHLA grading standards. Furthermore, Goldeneye Plus automatically manages the sorting process into different NHLA grades.

Scanning and defect recognition is performed by an award winning Microtec Goldeneye scanner, especially developed for grading rough, kiln dried lumber. According to your mill setup, this can be done in lineal or transversal feed direction.

Microtec's Goldeneye Plus hardwood grader features a Goldeneye 600 for lineal feeding or a Goldeneye 900 for transverse feeding. Both scanners may be easily integrated in any lumber sorting line.

Goldeneye Plus hardwood grader features an innovative low-power X-ray, line and dot lasers and in-house developed cameras and sensors. Our new and unparalleled solution is designed to scan hardwood lumber at speeds of up to 1,000 lineal feet per minute and up to 200 boards per minute in transverse feeding. Goldeneye scanners are capable of scanning random width boards up to maximum NHLA thickness and length sizes. Thanks to Microtec's Goldeneye Plus, automated lumber grading is no longer a dream!



«Microtec's Goldeneye Plus hardwood grader is the best solution to speed up and improve your grading process, leading to savings in labor costs and a boost in value of your produced boards. The Goldeneye Plus delivers consistent and reliable grading results according to the current NHLA grading rules.»

Dott. Ing. Federico Giudiceandrea
Microtec CEO



«Grading with the human eye is both physically and mentally challenging. The new automation not only shaves the amount of time it takes the grade lumber, it significantly boosts the accuracy.»

Prof. Dr. Rado Gazo
Purdue's University

Goldeneye Plus characteristics

- × Easily integrates in any sorting line
- × Solution for transverse and lineal transport
- × Consistent grading results
- × Speeds up production and grading process
- × Its reliable grading and optimization leads to an increase in product value

Goldeneye Plus benefits

- × Increased accuracy and capacity
- × Less need for investment if higher throughput is needed at the inspection station
- × Elimination of labor-intensive, costly grading and re-grading

Measured board characteristics

- × Length
- × Width and thickness profile
- × Surface measure
- × Wane
- × Knots
- × Splits and cracks
- × Bark
- × Stain

Improving value – upgrading of boards by trimming

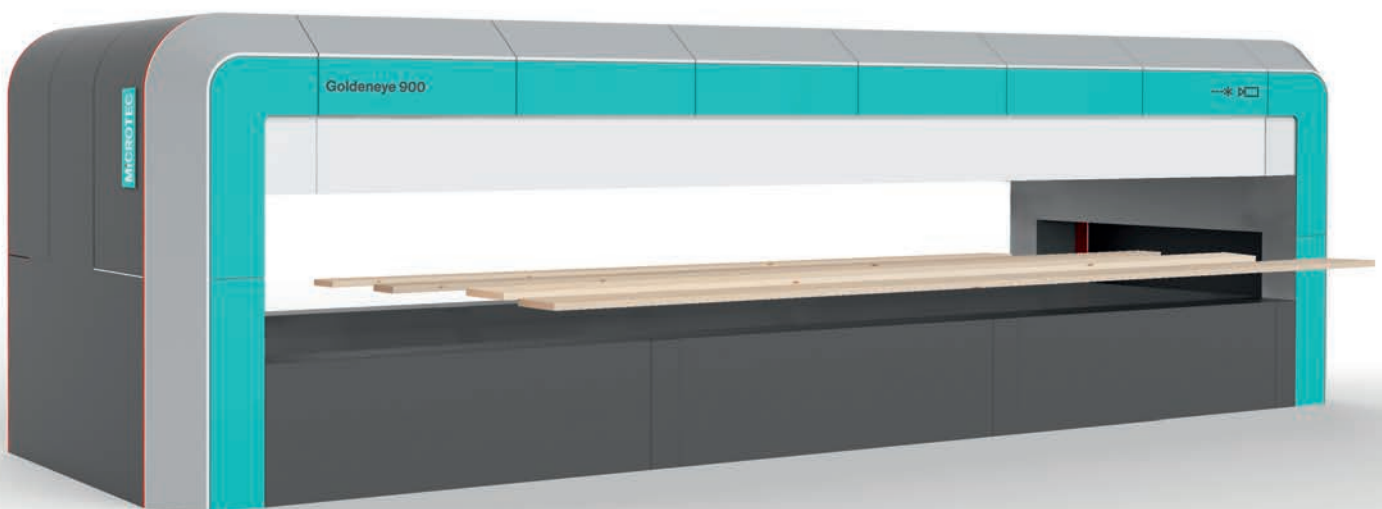
- × Crosscutting (end trimming)
- × Ripping (cutting to width)
- × Combination of both

List of NHLA grades

- × FAS
- × FAS 1F
- × SELECTS
- × No. 1 Common
- × No. 2 Common (A and B)
- × No. 3 Common (A and B)

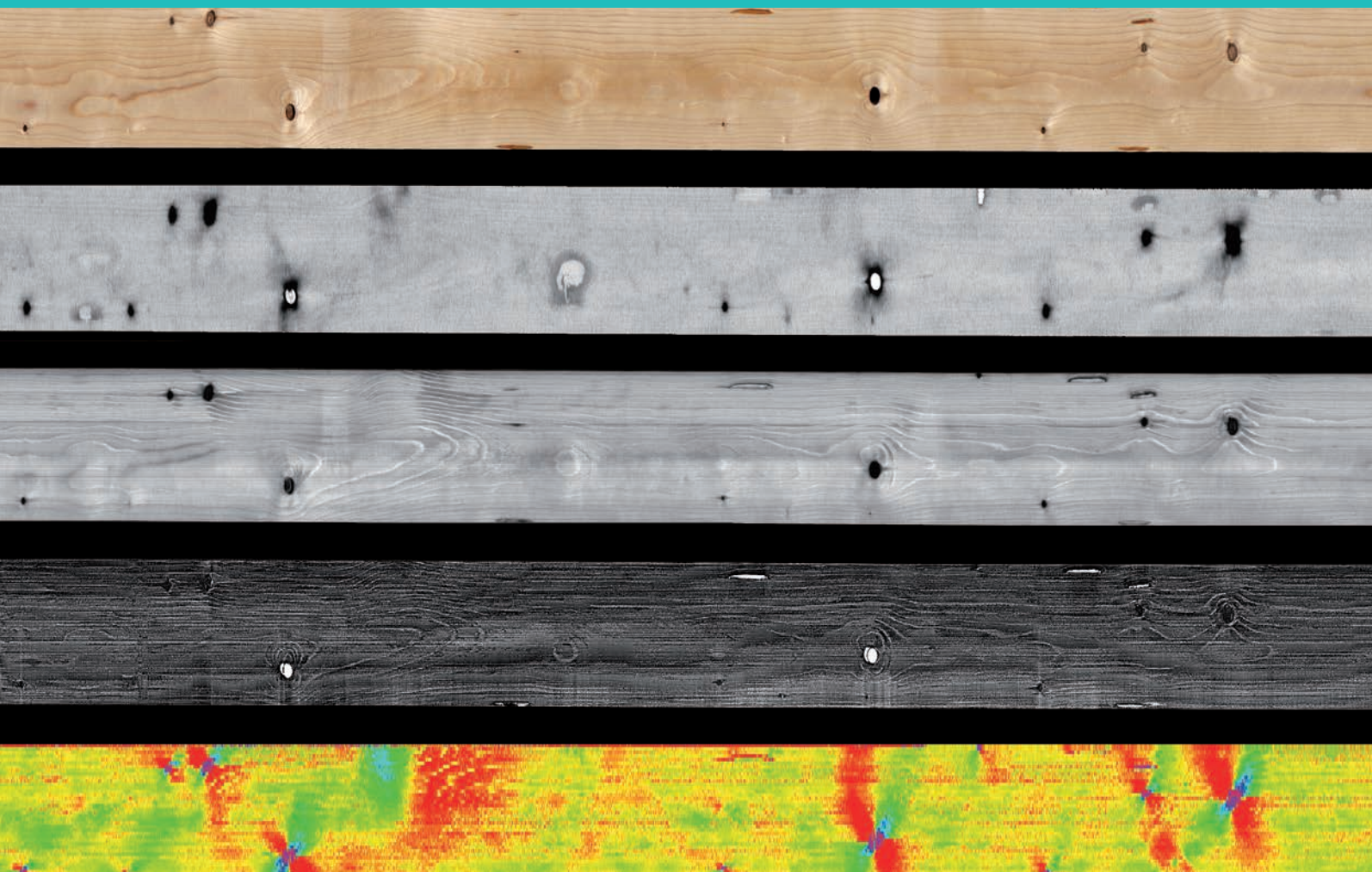
List of successfully tested species

- × White oak
- × Red oak
- × Yellow poplar
- × Ash
- × Cherry
- × Hard maple
- × Soft maple
- × Basswood
- × Hickory
- × Alder



Goldeneye 900

After testing 40,000 board feet of lumber the software delivered a 99.54% accuracy on value and a 92.20% accuracy on grade.



Member of



NHHL

NHHL
National Hardwood Lumber Association
nhla.com

Contributing Partner

PURDUE
UNIVERSITY®

Purdue University
purdue.edu

Microtec
Via Julius-Durst Straße 98
39042 Bressanone/Brixen, Italy
T + 39 0472 273 611
info@microtec.eu
microtec.eu

Information contained in this catalogue may be subject to technical changes and modifications.
© Microtec. All rights reserved — Design: studiomut.com

